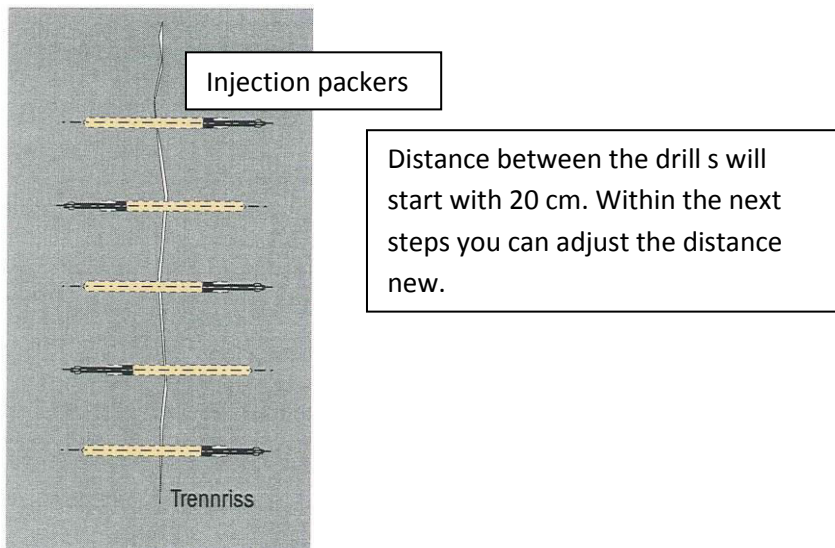
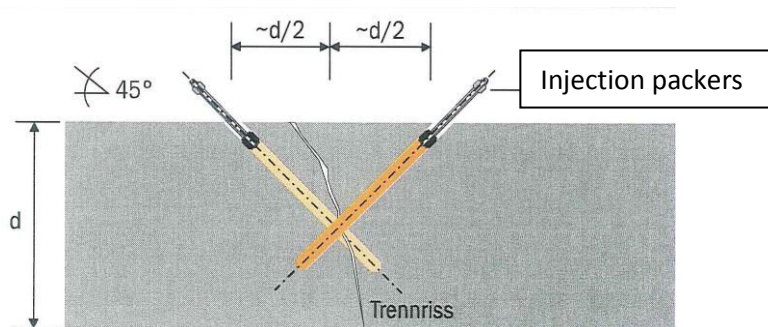


Project: Stop incoming water generally

Procedure of application

1. Areas with water inrush (cracks)

- Clean the surface and remove paints and plasters, so that you're able to see the complete crack.
- Prepare the cracks according to the drawings



Use a pump to inject at first INTRASIT PU Aquastop 13P to stop the water.

After 5 minutes inject INTRASIT PU Injekt 12P through the same injection packers.

In some areas may be it's necessary close the crack or to stop the inrushing water at first.

Therefore you can use INTRASIT R (quick hardening, after 15 seconds)

Consumption:

- a. Injection packers: 4-7 items per running meter
- b. INTRASIT PU Aquastop: 0,200g/Liter hollow space
- c. INTRASIT PU Injekt 2K: 1 Liter/Liter hollow space

2. **Cracks without intruding water**

You can inject INTRASIT PU Injekt directly.



Hand pump possible for a few meters of cracks



Electric pump machine



Injektion packers

Examples of application

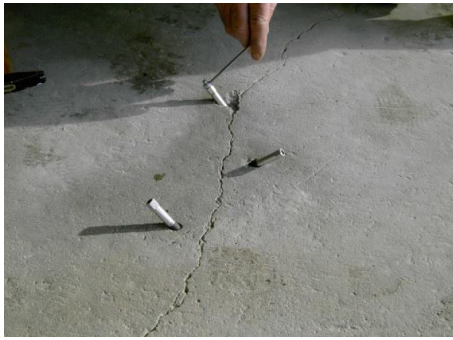
Drilling holes



Clean the holes by air



Setting injection packers



Inject electric pump



Closing holes



If necessary it's possible to apply a sealing slurry on top.